



Stellar Phoenix Virtual Machine Data Recovery 2.0 User Guide

Overview

Stellar Phoenix Virtual Machine Data Recovery is a complete solution to recover lost data from your virtual machine disk. It allows you to recover data from the following three types of virtual machine image / disks:

VMware (*.vmdk) - VMDK (Virtual Machine Disk) is a file format developed by VMware for its virtual application products. VMDK format is a container for virtual drives, used in virtual machines like VMware Workstation or VirtualBox.

VirtualBox (*.vdi) - VDI (VirtualBox Disk Image) is a file format developed by VirtualBox for its virtualization software packages for x86 and AMD64 / Intel64 based computers from Oracle. It is installed on an existing host operating system as an application and then this host application allows additional guest operating systems, each known as a Guest OS, to be loaded and run, each with its own virtual environment.

VirtualPC (*.vhd) - VHD (Virtual Hard Disk) is also a file format developed by Microsoft for its virtualization program. It virtualizes a standard PC and its associated hardware. Supported Windows operating systems can run inside VirtualPC.

Key Features

- Recovers data from VMDK, VDI and VHD virtual image files.
- For VMware images, it supports Monolithic Flat, two GB Max Extent Flat, Monolithic Sparse and two GB Max Extent Sparse file types.
- Supports FAT16, FAT32, NTFS, and exFAT file systems.



Stellar Phoenix Virtual Machine Data Recovery main screen

- Data Recovery is possible even if some extents of VMDK files are missing.
- Data recovery is possible, even if the virtual volume or disk is corrupted on virtual machine.
- Recovers data from virtual machine's volume, irrespective of operating system that has created it.
- Recovery of data from virtual image files is possible even if they are not getting recognized by the virtual machine.
- Recovers data even when virtual machine's volume is logically deleted (Search Lost Volume option).
- Provides Raw Recovery option to recover data in case of severe file system structure corruption.
- Supports saving of scan information that can be used to pause/resume recovery.
- Support NTFS journaling for deleted large files.

Why Stellar Phoenix Virtual Machine Data Recovery?

The powerful scan engine of the software does a thorough scan of selected volume of virtual machine, shows preview of files found during the scanning process and finally saves them to specified destination. It works even if you have deleted your files or volumes or formatted your virtual drive.

Recover Deleted Files

Stellar Phoenix Virtual Machine Data Recovery software can recover deleted files from your virtual machine's drives and/or volumes. Scan result shows all files stored in the selected volume. You can also filter deleted files using 'Filter File List' option.

Search and Scan for Lost Volumes from your Virtual Machine

Stellar Phoenix Virtual Machine Data Recovery software can also scan a virtual disk to find lost and deleted volumes. After a lost volume is found, it is included in the list of volumes. You can then select it for data recovery. Please note that the found volume will be shown in the list of volumes only in a continuous session of software.

Recover User-defined File Types

A list of supported file types is included in the software. Additionally, **Stellar Phoenix Virtual Machine Data Recovery** software allows you to add a new file types to the existing list of supported file types before scanning the virtual volume for recovery.

Filtered List of Scanned Files

After scanning a selected virtual disk, **Stellar Phoenix Virtual Machine Data Recovery** will show all recoverable files and folders in a three-pane window. Scan result window will show a tree containing all scanned folders, a list of items contained in the selected folder and a preview pane showing the preview of supported file types. You can also create a filtered tree that contains only the folders having files according to your defined criteria. Once scanning is complete and the scanned data is populated as a tree, you also have an option to search for specific files in the scanned result.

Installation Procedure

Before installing **Stellar Phoenix Virtual Machine Data Recovery** software, please ensure that your system meets the following minimum system requirements:

Minimum System Requirements:

- **Processor : Pentium Processors**
- **RAM : 1 GB minimum**
- **Hard Disk : 100 MB**
- **Operating Systems : Windows 10 / 8 / 7 / Vista / XP / Server 2003 / 2008**


To install the software:

1. Double-click **StellarPhoenixVirtualMachineDataRecovery.exe** file and click **Run** to start the **Setup Wizard**. **Setup - Stellar Phoenix Virtual Machine Data Recovery** dialog box is displayed.
2. Click **Next** to proceed. **License Agreement** is displayed.
3. Select '**I accept the agreement**' option in the **License Agreement** dialog box. Click **Next**. **Select Destination Location** dialog box is displayed.
4. Specify a destination in the text box or click **Browse** to select a destination. Click **Next**. **Select Start Menu folder** dialog box is displayed.
5. Specify a destination in the text box or click **Browse** to select a destination. Click **Next**. **Select Additional Tasks** dialog box is displayed.
6. Select the required check boxes for creating desktop icon and quick launch icon of the software. Click **Next**.
7. In the **Ready to Install** dialog box, verify the settings. Click **Back** to make any changes, or click **Install** to install the software.
8. After successful installation of the software, the '**Completing the Stellar Phoenix Virtual Machine Data Recovery**' screen opens. Click **Finish**.

Ordering the Tool

How to order Stellar Phoenix Virtual Machine Data Recovery?


You can order **Stellar Phoenix Virtual Machine Data Recovery** software online. For pricing details and to place an order, visit: <http://www.stellarinfo.com/disk-recovery/virtual-machine-recovery/buy-now.php>

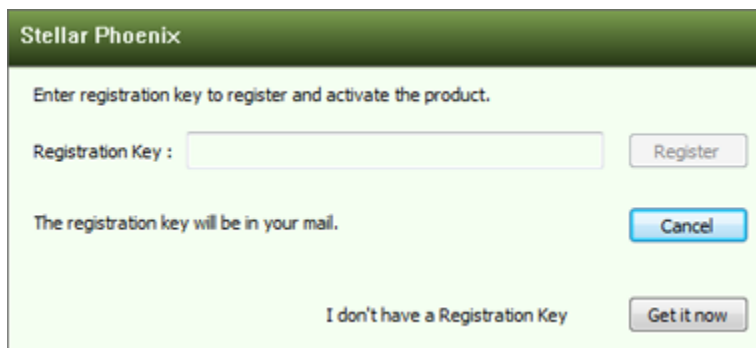
Alternatively, if you have already downloaded and installed the demo version of the software, then click 'Buy Now' in *About* dialog box, or click  (*Buy*) button directly, in the tool bar.

Registering the Tool

The demo version is just for evaluation purpose and must be eventually registered to use the full functionality of the software. The software can be registered using the Registration Key which you will receive via email after purchasing the software.

To register the software:

1. Run demo version of **Stellar Phoenix Virtual Machine Data Recovery** software.
2. On main user interface, click on  (About) icon and then click **Register** option. *Online Activation* window is displayed as shown below:



Stellar Phoenix

Enter registration key to register and activate the product.

Registration Key : Register

The registration key will be in your mail. Cancel

I don't have a Registration Key Get it now


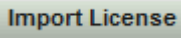
3. If you don't have the registration key, click **Get it now** link in the window to go online and purchase the product.
4. Once the order is confirmed, a Registration Key will be sent to the email provided.
5. Type the **Registration Key** (received through email after purchasing the product) and click **Register** button (Please ensure that you have an active Internet connection).
6. The software would automatically communicate with the license server to verify the entered key. If the key you entered is valid, software will be registered successfully.
7. **'Congratulations! your application has been successfully activated'** message is displayed after the process is completed successfully. Click **OK**.

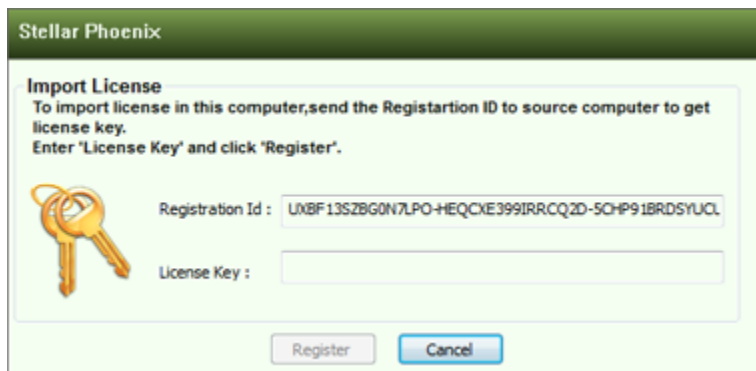
Export License

Stellar Phoenix Virtual Machine Data Recovery allows you to export the license of the registered software to another computer on which you want to run the software with full functionality. This operation deactivates the product on your current computer so it can be reactivated on the new computer.

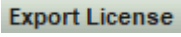
To export a software license from one computer to another, please follow the specific steps below:

On Target Computer:

1. Run demo version of the software.
2. Click **Settings**  icon.
3. Click **Import License**  button from **Settings** window.
4. An **Import License** dialog box will appear displaying **Registration ID** in its respective field.



On Source Computer:

1. Run registered version of **Stellar Phoenix Virtual Machine Data Recovery** software.
2. Click **Settings** button.
3. Click **Export License**  button from **Settings** window.
4. In **Export License** dialog box copy the **Registration ID** displayed on the Target Computer in the field of Registration ID on the Source Computer.

Stellar Phoenix

Export License

To export the program license, enter the 'Registration ID' of the target computer. Next, click 'Transfer In' to generate a License Key and paste it in the target computer.

Registration ID:

License Key :

[Click here to know more](#)

Save To File Transfer In Cancel

5. To get your License Key, click **Transfer In** button on Source Computer. This will generate a License Key.
6. You can also save the License Key generated on the source computer. Click **Save to File** button to save the Registration ID and the License Key. In **Browse for Folder** dialog box, select the location where you want to save the details. Click **OK**.
7. '**License Key has been saved successfully**' message is displayed after the saving process is completed successfully. Click **OK**.

This will deactivate the product on Source Computer and you will no longer be able to use the software anymore on this computer.


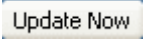
On Target Computer:

1. Type the **License Key** which you have generated on the Source Computer in the provided field of License Key.
2. Click **Register** to complete the activation process.
3. '**Congratulations! your application has been successfully activated**' message is displayed after the process is completed successfully. Click **OK**.

How to Update

Stellar Phoenix update wizard keeps your copy of the software up-to-date. The wizard runs the update process and automatically checks for updates. You need an active internet connection to check for updates using this option. You can check for both, latest minor and major updates available online. You can easily download the minor updates using the update wizard. However, you need to purchase any major version updates whenever they are available.

To start Stellar Phoenix Update Wizard:

1. Run **Stellar Phoenix Virtual Machine Data Recovery** software.
2. On the main screen, click  icon. Under **General Settings** tab, click  button.
3. '**Stellar Phoenix Update Wizard**' window pops up. Click **Next** to proceed.
4. The wizard will start searching for the latest updates and if it finds any new updates, a window will pop up indicating the availability an update.
5. Click **Next** and the software will start downloading update files from the server. When the process is complete, the software will updated to the latest version.

Live Update may not happen due to following reasons:

- Internet connection failure
- Unable to download configuration files
- Unable to locate updated files or version
- Unable to locate executable file



Tip: *You need to purchase the major version updates of the software, whenever they are available.*

Stellar Support

Our Technical Support professionals will provide solutions for all your queries related to Stellar Products.

You can either **Call Us** or **Go Online** to our support section at <http://stellarinfo.com/support/>

For **price details** and to **place an order**, click <http://www.stellarinfo.com/disk-recovery/virtual-machine-recovery/buy-now.php>

Chat Live with an **Online technician** at <https://www.stellarinfo.com/>

Search in our extensive **Knowledge Base** at <http://www.stellarinfo.com/support/kb/>

Submit enquiry at <http://www.stellarinfo.com/support/enquiry.php>

E-mail to Stellar Support at support@stellarinfo.com

Stellar Support Helpline

Monday to Friday [24 Hrs. a day]

USA (Toll free- Pre Sales Queries) +1-877-778-6087

USA (Post Sales Queries) +1-732-584-2700

UK (Europe) +44-203-026-5337

Australia & Asia Pacific +61-280-149-899

Netherlands Pre & Post Sales Support +31-208-111-188

Worldwide +91-124-432-6777

Email Orders orders@stellarinfo.com

Starting the Software

To start Stellar Phoenix Virtual Machine Data Recovery software, use any one of the following methods:

Click **Start -> Programs -> Stellar Phoenix Virtual Machine Data Recovery -> Stellar Phoenix Virtual Machine Data Recovery**.

Or,

Click **Stellar Phoenix Virtual Machine Data Recovery** desktop icon.

Or,

Click **Stellar Phoenix Virtual Machine Data Recovery** in **Quick** launch tool bar.

Supported File Types

Stellar Phoenix Virtual Machine Data Recovery software supports preview of the below mentioned file types. This helps you to verify / preview file (s) before actually recovering them.

Acrobat Files

PDF

Archive Files

ARJ, ALZ, ZIP, RAR, CAB

Audio Video Files

RMI, WAV, MPG, WMV, WMA, MIDI, AU, MP3, AVI, ASF, MPEG, MID

Backup Files

BKF

Database Files

MDF, DBF, CSV

Image Files

BMP, WBMP, WMF, EMF, JPEG, JPG, JPE, J2K, JP2, JBG, J2C, JPC, PNG, MNG, JNG, JFIF, DIB, GIF, TIF, TIFF, TGA, PCX, PGX, PNM, PGM, PPM, RAS, X3F, PEF, NEF, KDC, K25, ERF, DNG

Internet Files

HTM, HTML, SHTML, SHTM, MHTML, XHTML, XHT, PLG

Miscellaneous Files

C, PRG, TEXT, CXX, HPP, XML, CC, HH, ASM, JS, PHP, ASP, LIC, DEF, CSPROJ, VCPROJ, SLN, CSS, DSP, DSW, CS, JAVA, INF, INI, LOG, CGI, JSP, REG, FRM, TXT, CPP, H, BAT

Office Documents

DOC, DOT, DOCX, DOTX, XLS, XLT, XLW, XLB, XLSX, XLTX, PPT, PPS, POT, PPTX, PPSX, POTX, RTF

Tip: You can use the hex viewer to preview severely corrupt files and file types not supported by previewer of the application.

Main User Interface

Main user interface of **Stellar Phoenix Virtual Machine Data Recovery** software is quiet simple, easy to use and effective. It contains the tabs, '**Data Recovery**' and '**Resume Recovery**'. It also has user-friendly icons of '**Settings**', '**About**', and '**Help**' to quickly access the menus. '**Learn More**' links are also there for a quick view of the help manual. A pane is displayed when a virtual disk is selected in the application for any operation.



Main User Interface screen

Tabs and Buttons

Classic Tree

You can use this tab (on the Scan Results screen of the software) to view the scan result in form of Windows directory structure.

File Type List

You can use this tab (on the Scan Results screen of the software) to view the scan result categorized as file types.

Filtered Tree

You can use this tab (on the Scan Results screen of the software) to view the scan result after filtering according to file mask.



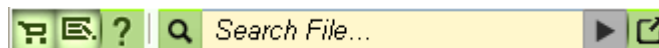
File Type List Tab

Advance Filter Option

You can use this button (on the Scan Results screen of the software) to apply file mask and generate 'Filtered Tree'.



Advance Filter Option



Advance Find Option

Some other general buttons/icons that you will encounter while using Stellar Phoenix Virtual Machine Data Recovery software are as follows:



Click the button to buy the software online.

Buy Now



Click this button to view log report.

View Log



Click this button to open user help guide.

Help



Click to find files of specific file types.

Find Now



Click to enter more advanced search criteria for files.

Advance

Find



Recover

This button is provided on the Scan Results window. Click this to start recovery of files.



Click this button to move to main screen from preview window.

Back



About

This button is provided on the main screen. Click this to display information about the application.



Settings

This button is provided on the main screen. Click this button to configure general settings and file types settings.

Data Recovery

Stellar Phoenix Virtual Machine Data Recovery software provides you with different options to recover your data from virtual machines. All recovery methods are different as they apply different scanning processes.

To recover data, you need to first scan the virtual disk or its volume. There are four scanning options available to a user. They are '**Quick Recovery**', '**Deleted File Recovery**', '**Advanced Recovery**', and '**Raw Recovery**'. If you want to recover data using a previously scanned information file, it has an option of scanning them as well. After scanning, you can preview scanned files before recovering them. You can also filter, find, and select the files you want to recover. You can then recover and save the selected files to a destination folder of your choice.

You can also recover data from deleted and lost volumes from your virtual machine. **Scan Lost or Deleted Volumes** option will list all volumes that have been deleted from your virtual disk. You can perform Quick Recovery, Deleted File Recovery, Advanced Recovery or Raw Recovery on listed virtual disks / volumes.

- Scan Virtual Machine Image Type
- Search Lost or Deleted Virtual Disk / Volumes
- Raw Recovery
- Preview Scan Result
- Recovering Files
- Specify Destination to Save Recovered Data
- Find Files
- Filter File List - Set Mask
- Save Scan Information to Resume Later
- Recovery Options

Scan Virtual Machine Image Type

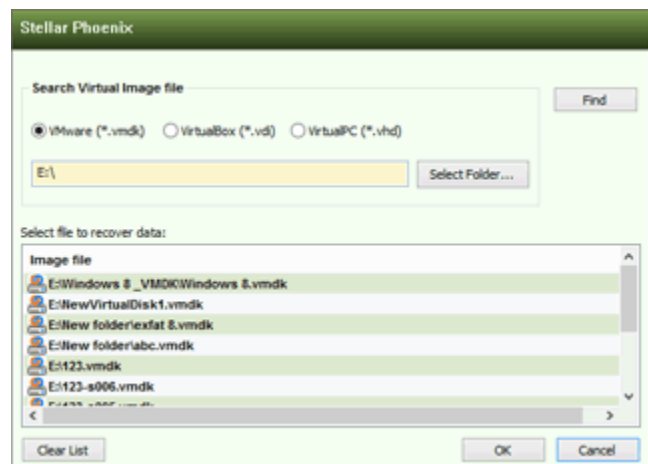
You can use 'Data Recovery' option to mount a virtual machine image type and find, select & recover data from it. You can select only one virtual machine image type at a time for scanning. **FAT**, **exFAT**, and **NTFS** file systems are supported by the software.

To scan a virtual machine image type volume:

1. Run **Stellar Phoenix Virtual Machine Data Recovery** software.
2. On **Data Recovery** tab, from **Select Virtual Machine Image Type** section, select a virtual machine image type - either a **VMware (*.vmdk)**, **VirtualBox (*.vdi)** or **VirtualPC (*.vhd)** image.
3. If you know the location of a virtual machine image file, use **Browse** button to locate it or click on **Find** button to search for the image file in a folder or volume.
4. Click **Mount Virtual Disk** button and after successful mounting, the virtual machine details are displayed.
5. Select a virtual volume, if you want to recover data from a specific volume of the virtual machine and from the flying pane, click any one of the following recovery options:
 - **Quick Recovery** - This scan is fastest of all the scan processes and is highly recommended. This option will list both existing and deleted files.
 - **Deleted Recovery** - Choose this option to scan for deleted files and folder of the volume.
 - **Advanced Recovery** - Choose this option to recover data from a drive formatted from **FAT** to **NTFS** system,



Virtual Machine Data Recovery screen



Find Virtual Image Files screen

or vice versa.

- **Raw Recovery** - This scan searches for files as per file signatures and size. This scan is slower than **Quick Recovery** but gives better results.

6. Select a virtual hard drive from **Select Hard Drive to Search Lost Volumes** section, in case you want to search for lost volumes from your virtual machine.

From the flying pane, click any one of the following recovery options:

- **Search Lost Volume** - This scan will search for deleted and lost volumes from your virtual machine's hard drive.
- **Raw Recovery** - This scan searches for files according to the file signatures and size. This scan is slower than **Quick Recovery** but gives better results.

Search Lost or Deleted Volumes

Whether a virtual volume is recognized or not, depends on the partition table of your virtual machine. If a partition table is corrupt, then you will not be able to see the partitions you need. A volume may also not be recognized if the file system or the virtual machine's hard disk is severely damaged.

Stellar Phoenix Virtual Machine Data Recovery software allows you to search and recover data from lost and deleted volumes of a virtual disk. You should use this option to recover data from an accidentally deleted virtual volume. This option will search and list all the deleted and lost volumes of the virtual disk along with existing volumes.

To recover data from deleted volumes of a virtual disk:

1. Run **Stellar Phoenix Virtual Machine Data Recovery** software.
2. Click the **Click Here to Search Lost Volumes** drop down link in the main screen. **Select Hard Drive to Search Lost Volumes** section is displayed.
3. In the **Select Hard Drive to Search Lost Volumes** section, all virtual drives are listed with their details. Select the drive to be scanned for lost or deleted volumes.
4. In the flying pane, select scan type:
 - **Quick:** This scan is fast and recommended.
 - **Deep:** This scan is slower than Quick scan but gives better results.
5. Click **Search Lost Volume** button. A scan for lost or deleted volumes will be performed in the selected disk.



Search lost or deleted volumes screen

You can minimize the application window by clicking on the minimize button of the application.

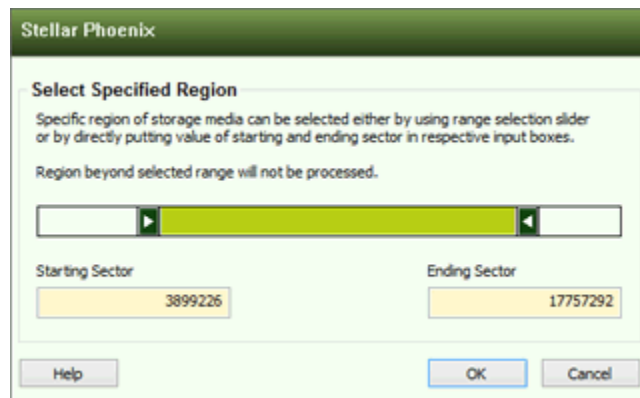
6. Any 'lost volume' detected, will be listed in the **Select Volume to Recover Data** list section. Now, you can select the 'found lost volume' for scanning and recovery.

Raw Recovery

Raw Recovery option of **Stellar Phoenix Virtual Machine Data Recovery** software is based on 'file type based scanning' technique for the recovery of lost and deleted files and folders from your virtual machine. You can scan a complete virtual disk, a selected region of the virtual disk, or a volume of the virtual disk to recover data. File type gives information about a file and the name of its extension. You can add, edit, or remove file types as per your preferences.

For raw recovery of data from a virtual disk:

1. Run **Stellar Phoenix Virtual Machine Data Recovery** software.
2. **Browse** or **Find** the required virtual machine image file and click **Mount Virtual Disk** button.
3. In **Select Volume to Recover Data** section, all the volumes of the virtual disk will be listed.
4. Click '**Click Here to Search Lost Volumes**' drop down link in the main screen. **Select Hard Drive to Search Lost Volumes** section is displayed.
5. In '**Select Hard Drive to Search Lost Volumes**' section, all virtual drives are listed with their details. Select the drive to be scanned for raw recovery.
6. In the flying pane, click **File Type** to select, add, edit, or remove file types such that scanning process should include or exclude file types.
6. If you want to scan the entire virtual disk, click **Raw Recovery**. If you want to scan selected region of the virtual disk then click **Select Range**. In the '**Select Specified Region**' screen, drag sliders to define starting and ending sectors. Click **OK**, and then click **Raw Recovery**. Scan will be performed on the selected region only.
7. Software will scan the selected source and all files found will be listed.



Select Specified Region screen

For raw recovery of data from a volume:

1. Run **Stellar Phoenix Virtual Machine Data Recovery** software.
2. Under **Data Recovery** tab, in '**Select Volume to Recover Data**' section, all volumes of the virtual machine are listed along with their details. Select the volume, you want to scan for raw recovery.
3. In the flying pane, click **File Type** to select, add, edit, or remove file types such that scanning process should include or exclude file types.
4. Software will scan the selected source and all files found will be listed.

Preview Scan Result

Stellar Phoenix Virtual Machine Data Recovery software shows the preview of all files and folders present in the scanned virtual disk / volume in a three pane structure. The three panes are the left, top-right, and the bottom-right panes.

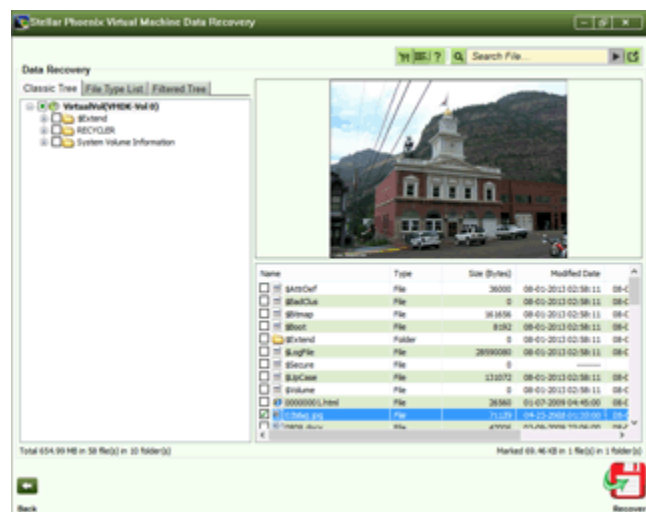
- In the left-pane, a tree structure according to folders is created.
- Top right-pane shows preview of file that are supported by the software.
- In bottom-right pane, all files and folders that are in the selected folder in the tree view are listed.

To preview a scanned file:

1. Click a tab (**Classic Tree**, **File Type List**, or **Filtered Tree**) in the left pane.

- **Classic Tree** - In this view, files/folders are listed as they are found. To see **Classic Tree** preview, click **Classic Tree** tab in preview window.
- **File Type List** (not available in **Raw Recovery**) - In this view, files/folders are listed according to their type such as Document, Audio, Video, Archive, etc. To see **File Type List** preview, click '**File Type List**' tree tab in preview window.
- **Filtered Tree** - You can see list of file type according to your preference in this preview. Click **Filtered Tree** tab to view the filtered list.

2. Click a folder in the left pane tree structure to list files of that folder in the bottom right pane.
3. Double-click the folder to move deeper into the folder.
4. Click a file in the bottom-right pane to preview the file. Only supported files can be previewed.
5. To view files in binary format, right-click the file and select **Show as Hex**.
6. You can also rename the file before recovery. Right-click the file and select **Rename** to rename it.



Preview Scan Result screen

Recovering Files

Stellar Phoenix Virtual Machine Data Recovery can recover all files of supported file formats. You can save files and folders listed in preview at preferred location.

To recover lost files:

1. Select the files and folders you want to recover. You can recover all files or individual files at preferred location. In addition, you can narrow the search result with the **Filtered Tree** option. Or, you can select only specific type of files to view or recover.

- **To select all files**

- Check the root node and then click **Recover**.

- **To select individual files**

- Click a folder in the left pane to view files stored in it.
- Check the files in the file list pane, and then click **Recover**.

- **To recover individual file**

- Right-Click the file in the file-list and select **Recover** option.


- **To find files according to a search criteria:**

- Use the Set File Mask option in **Filtered Tree**, or Find Files option.

- **To recover selected folders and files and folders included in them:**

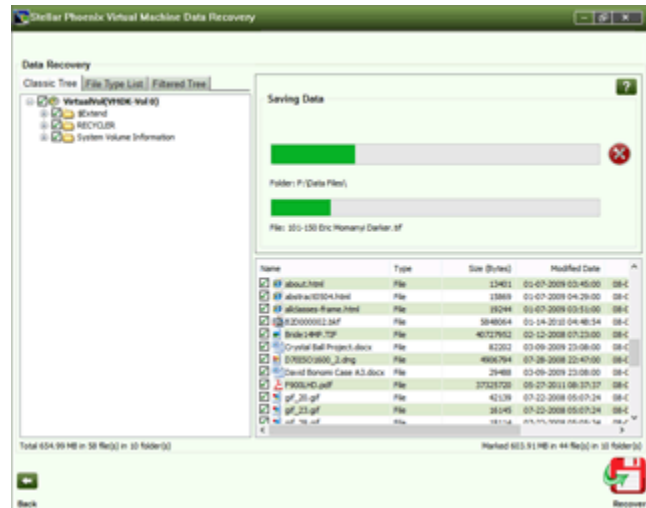
- Check the folder in the left pane, and then click **Recover**.

- **To recover only files of specific category:**

- Click **File Type List** tab. Check the **File Types** category folders as per your choice. The selected '**file types folders**' files will be listed in the file list pane. You can select the individual files in the list.
- You can view the log report of the executed process for analysis.
- Click  (**Recover**).

2. A **Select Destination** dialog box is displayed. Specify the destination and choose the options as per requirement.

3. Click **OK** to start save process. If the destination files have same names then you can overwrite, rename or skip. Choose as per the case.



Saving Data screen

The selected files will be saved at the specified location. Navigate to the destination to view files.

Specify Destination to Save Recovered Data

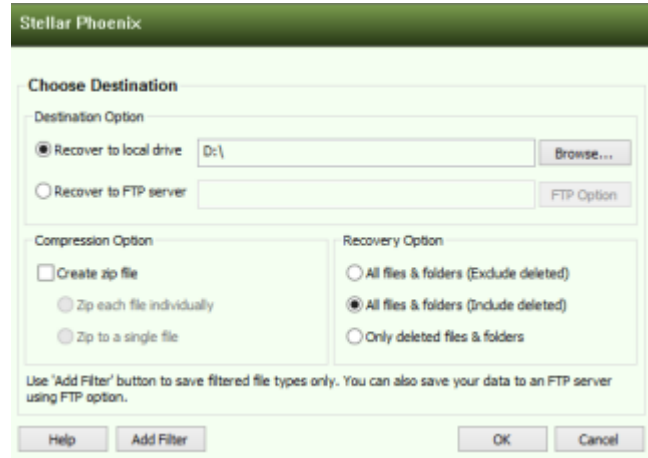
You can save recovered files either to local hard disk or to a FTP (File Transfer Protocol) server. You can also apply compression option to recovered files.

To save recovered files to local hard disk:

Select **Recover** to local drive option. Click **Browse** to specify the location where files should be saved. Click **OK** twice.

To save recovered files to FTP server:

1. Select **Recover to FTP server** option.
Click **FTP Option**.
2. Provide the required values such as **Server Name/IP Address, Port No., Username** and **Password**.
3. Click **Browse**, select a folder and click **OK** three times.



Choose Destination to Save Recovered Data screen

Applying Compression:

You can save recovered files in compressed zip folders. However, you can only apply compression if recovered files are saving to local disk drive.

To apply compression option:

Check the Create zip file check box. Select:

- **Zip each file individually**
This option saves all selected file in their corresponding zip folder.
- **Zip to a single file**
This option saves all recovered files in a single zip folder.

Apply Recovery Option

This section is shown when all the files and folders are selected for recovery. You can choose to exclude or include the deleted files while recovery.

To apply recovery option, select:

- **All files & folders (Exclude deleted)**

Choose this option to exclude the deleted files while recovering the selected files and folders.

- **All files & folders (Include deleted)**

Choose this option to include the deleted files and folders while recovering the selected files and folders.

- **Only deleted files & folders**

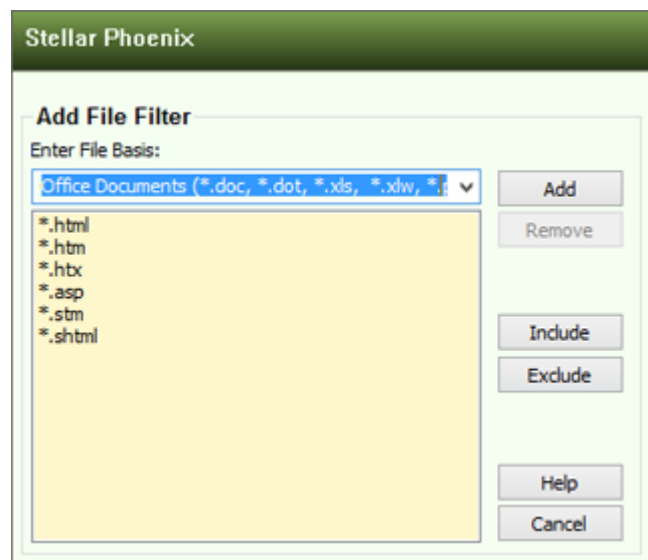
Choose this option to recover only deleted files and folders.

Add Filter

You can add a filter according to your requirement.

To apply add filter option:

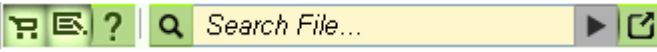
1. Click **Add Filter** in **Choose Destination** window.
 - Select a group of file types from the **Enter File Basis:** drop down box.
 - Type a file extension in the **Enter File Basis:** drop down box and click **Add** button, to include it in the list.
2. Click **Include** to include the listed file types on recovery.
3. Click **Exclude** to leave the listed file types on recovery.






Add File Filter screen

Find Files

You can search files in the trees in the left-pane shown after scanning process. If you want to view or recover specific files from the scan result you can use **Find** option. This provides you various options for searching required files.

To search files:  Search File...

- In '**Search File**' box, type few or all characters of file name(s) or file type(s) separated by semi colon (;). Click the **Find**  button.
- Click **Search Options**  button. In '**Find**' screen, type the few or all characters of file name (s) or file type (s) separated by semi colon (;) in the **Enter file type(s) delimited by semi-colons** text box. Check the **Deleted File**, **Match Case**, and **Existing Files** options as per requirement. Click **Search Now**.

The first file matching the criteria is highlighted in the file list. Press **F3** or again click on the  (**Find**) button to move to next file matching the criteria.

Advanced Options


Advanced option in **Find** dialog box enables you to search files according to the more advance options like date criteria and size of file.

- **Size:** You can define size of file. You have two option for size, either the file should not exceed the defined size or should have at least the defined size.
- **Date:** Date search provides you two options - Last Modified Date and Created Date for searching required file. Select **Last Modified Date** to search file according to the last modified date. Select **Created Date** to search file according to the creation date of file. In addition, you can specify number of days, number of months or time interval for any of the selected date option.



Find Files dialog box


To search files by using advanced options:

1. Click Search Options  button. In 'Find' screen, click Advanced.
2. Check and specify either or both of the Size and Date options.
3. Click Search Now. The file, if found, will be highlighted in the file list. Press F3 button to move to next file matching the search criteria.

Filter File List - Set Mask


Filter File List is used to generate **Filtered Tree** view in the left pane. **Filter File List** feature provides you with many options for creating file masks to filter the scan result.

To create Filtered tree:

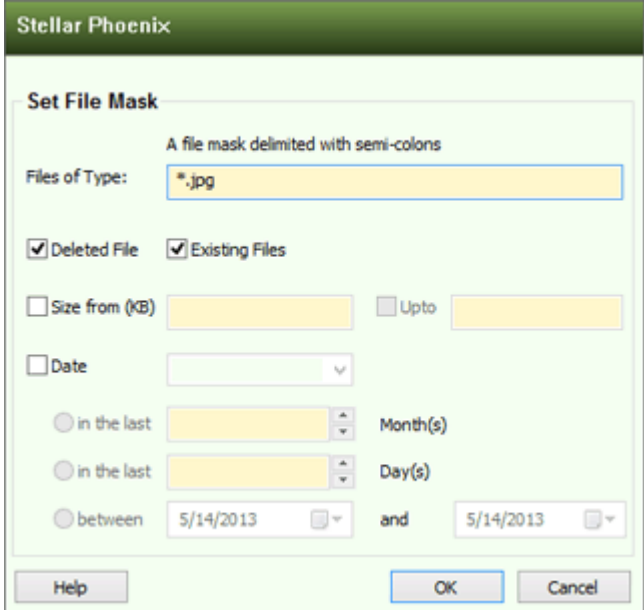
1. In '**Search Result**' window, click on **Filtered Tree** tab in the left pane.
2. In '**Filter**' option, type the file type(s) separated by semi colon (;). Click the **Filter**  button.

Or,

2. Use **Set File Mask** option dialog box to filter files according to the more advance options like date criteria and size of file.

Click  button in the '**Filter**' box.

- In the **Set File Mask** screen, type the file type(s) separated by semi colon (;) in the **File of type(s)** text box. Check the **Deleted File** and **Existing Files** options as per requirement.
 - **Size:** You can define size limit of filtered files. Define the lower limit of size in **Size from (KB)** text box. Select **Upto** check box if you want to define the upper limit of file size and then specify the size in KB.
 - **Date:** Date search provides you two options - **Last Modified Date** and **Created Date** for searching required file. Select **Last Modified Date** to search file according to the last modified date. Select **Created Date** to search file according to the creation date of file. In addition, you can specify number of days, number of months or time interval for any of the selected date option.
3. Click **OK** to generate the **Filtered Tree**.



File Mask options

Save Scan Information to Resume Later

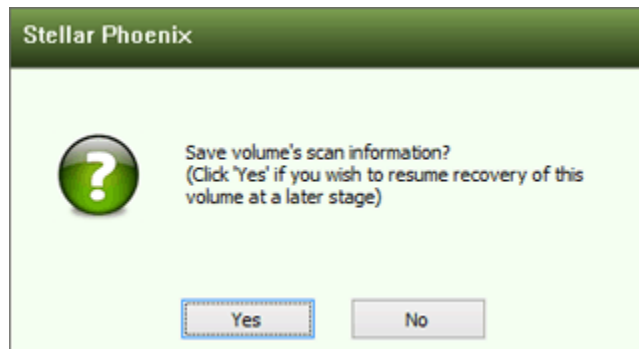
You can save the scan result of any scanning process as an IMG file. You can save the scan result as an image file either of a complete or an aborted recovery process. However, the aborted scan would contain limited information. Hence, you should perform a complete scan, and then save the scan result.

Saving scan information saves your time. Since, you will not need to scan the same virtual drive again. You can resume recovery by selecting the image file.

To save scan information:

1. In '**Scan Results**' window. Click either **Back** or **Close** button.
2. You will also be prompted to save scan information. Click **Yes**.
3. In '**Save scan information**' dialog box, browse to the location where you want to save the image file. Type the name of the image file in the **File name** text box. Click **Save**.

Scan Information file will be saved with IMG extension.



Save Scan Information file prompt

Recovery Options

Stellar Phoenix Virtual Machine Data Recovery software provides you with different options to recover data from your virtual machines. '**Quick Recovery**', '**Deleted File Recovery**', '**Advanced Recovery**', and '**Raw Recovery**' are the four recovery methods available in this software. All methods are different as they apply different scanning processes.

- **Quick Recovery**
- **Deleted Recovery**
- **Advanced Recovery**
- **Raw Recovery**

Quick Recovery

Quick Recovery is the fastest and the easiest option using which you can recover data from a virtual disk. It can easily recover data accidentally deleted or erased data.

'**Quick Recovery**' option of **Stellar Phoenix Virtual Machine Data Recovery** software can perform a quick scan on selected existing volumes, lost volumes on a virtual disk. You can select only one volume at a time for quick scan. This scan method is fast and efficient. You will find almost all data by performing a quick recovery on selected virtual disk / volume. You can also load a scanned information file to perform quick recovery.

Deleted Recovery

You can recover files that are deleted from a virtual disk / volume by using deleted file recovery process. The scan result lists only files that are deleted from the selected virtual drive.

In this recovery option, in NTFS file systems, NTFS journaling is supported for large deleted files.

Advanced Recovery

You can recover data from a formatted virtual disk / volume by using '**Advanced Recovery**' option of **Stellar Phoenix Virtual Machine Data Recovery**. If a volume is formatted and all data is lost from that virtual drive, you can recover that data performing this type of recovery.

In addition, you can scan volume either as **FAT**, **NTFS**, or **ExFAT**. For example, before formatting, the file system of the volume was **FAT**. Then, you formatted the volume and created a new **NTFS** volume in its place. You can scan the new volume as **FAT** such that all files will be found during scanning process. Also, if before formatting the volume the file system was **FAT** and you selected scanning as **NTFS** then scanning process can still find data from the previous volume.

Raw Recovery

Raw Recovery allows you to recover data from virtual hard disk or volumes. It does a comprehensive scan of the volume to recover deleted data. It searches for lost files on the basis of file signature. This recovery option recovers everything that is found in the selected source. This option is especially helpful in case of severely corrupted volume. You can select a source or define a region for scanning process. However, you cannot select region from a volume while performing **Raw Recovery** on the volume.

This option can recover data from a virtual disk, irrespective of its file system. This option is especially helpful when your virtual machine is not recognizing its volumes.

Also, a long list of file types is provided in **Raw Recovery** file type option. You can add file type, if the required file type is not listed in the file type list.

Resume Recovery

You can use the **Resume Recovery** option of **Stellar Phoenix Virtual Machine Data Recovery** software to restart data recovery. You can resume recovery by either:

- **Using Scan Information File**

The scan information file of a virtual drive is saved as an IMG file. You can use the scanned info file to restart recovery at any time.

You should save the scan information file of a virtual drive at a different location with proper naming such that you can easily retrieve the required file for restarting recovery.

Recover using Scan Information File

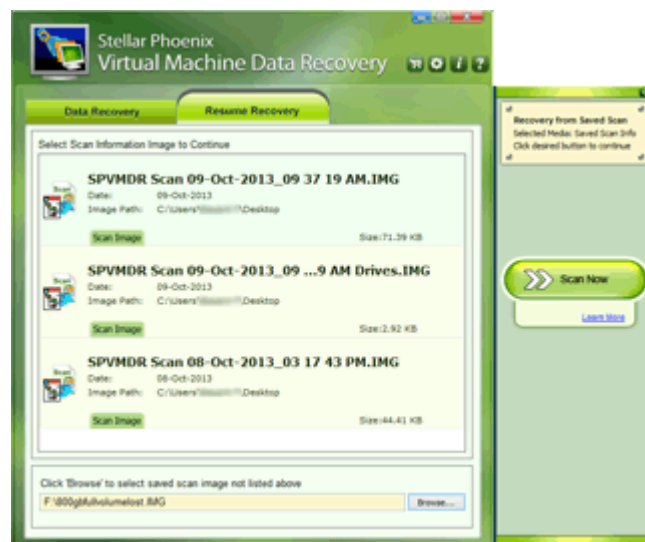
Scan information file contains information of a scanning process. Scan information file is saved as an image file (IMG). You can save scan information file during any complete or incomplete recovery process. Image file can be used to restart recovery later. For example, you saved image file of a scanning process and recovered only some files from that scan result. Later, you want to recover some more files from the same virtual disk.

You can use the saved image file to restart recovery. Using a scan information file saves time, since scanning of each file does not take place. All files and folders shown after scan process will be shown on loading the image file created for that scan. In addition, if you have performed scanning process but not saved any files then you can use the image file to restart recovery at some other time.

You should remember the recovery process for which the image file was created. This is because you cannot perform a different recovery process by using a different image file. For example, an image file of quick recovery process restarts quick recovery not deleted file recovery.

To resume recovery by using scan information file:

1. Run **Stellar Phoenix Virtual Machine Data Recovery** software.
2. Click **Resume Recovery** tab. Select the image file from the list, or click **Browse**.
3. In **Open** dialog box, locate and select the scan information, and then click **Open**.
4. Click **Scan Now**, all files and folders will be listed. Select files to recover them.
5. A '**Select Volume to Recover Data**' section will become visible when you click on a virtual drive's IMG file.



Resuming recovery using scanned information screen

Volumes stored in the image file will be listed. Select the required volume.

6. In the flying pane, choose any one of the following recovery options:
 - **Quick Recovery:** This scan is fast and recommended.
 - **Deleted Recovery:** Choose this to scan for deleted files.
 - **Advanced Recovery:** Choose this to recover data from a drive formatted from **NTFS** to **FAT** system, or vice versa.
 - **Raw Recovery:** This scan is based on recovery using file signatures. This scan is slower than **Quick Recovery** but gives better results.



Lost Volumes Resume Recovery screen

View Log Report

You can view, clear, and save log report of events and processes that occur in **Stellar Phoenix Virtual Machine Data Recovery** software. Log report can be viewed in '**Scan Result**' window.

To view log report

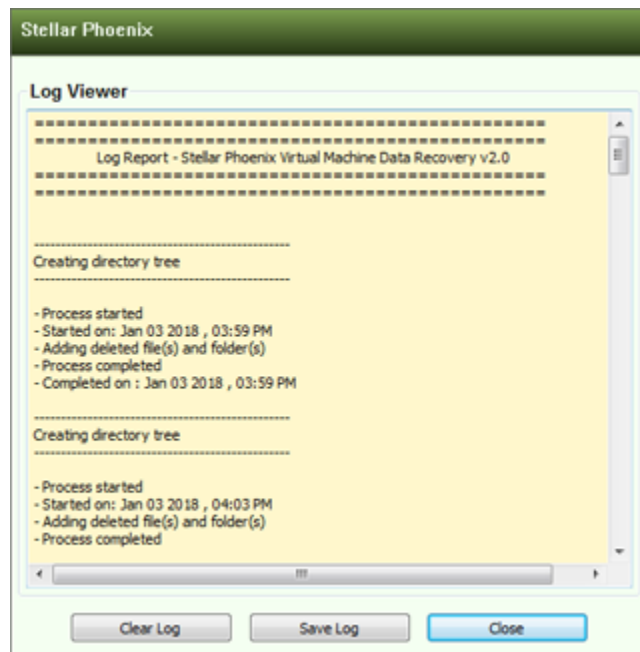
- On the tool bar, click **Log Report**.

To save log report

- On the tool bar, click **Log Report**.
- Click **Save Log**.
- In '**Save As**' dialog box, specify the destination to save log file. Click **Save**. Note that, a warning message to save log report is displayed, at the time of closing the application.

To clear log report

- On the tool bar, click **Log Report**.
- Click **Clear Log**.


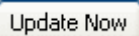


Log Viewer screen

Configure Settings

You can change the settings of **Stellar Phoenix Virtual Machine Data Recovery** software before scanning.

To configure Stellar Phoenix Virtual Machine Data Recovery software:

- Run **Stellar Phoenix Virtual Machine Data Recovery**. Click . Under **General Settings** tab, configure general options:
 - **Check for 'Latest Updates' at startup** - Select this check box to receive latest updates.
You can also click  to launch **Stellar Phoenix Update Wizard**. This wizard automatically detects and downloads the new updates of the software.
 - **Log Settings** - Select '**Save log before closing application**' check box to automatically save log of processes. Click **Browse** to specify the destination where log files should be saved.
 - **Scan Settings** - Choose it to avoid signature search in **Advance Scan**.
- Click **Add File Types** tab to select, add, remove, or edit file type. This will become the default settings.

Selecting File Type

File types give information about the type of file such as video, audio and its extension. You can select file types while performing signature search such that, scanning process should search only for the specified file types.

File types are listed in the **Add File Types** tab of **Settings** screen. The '**Software Name**' column shows the software that created the files having the specified file type, '**File Extension**' shows the extension of the file and size (KB) shows the maximum allowed size of files having the specified file type. The file types are categorized according to groups. File Type (s) includes every file type available in different file groups. Different groups are Application, Graphic, Pictures & Raster Images, Archive, Audio, video & Animation, Mails, Database, Office Documents, Internet, and Miscellaneous.

To select file types from file list for scanning:

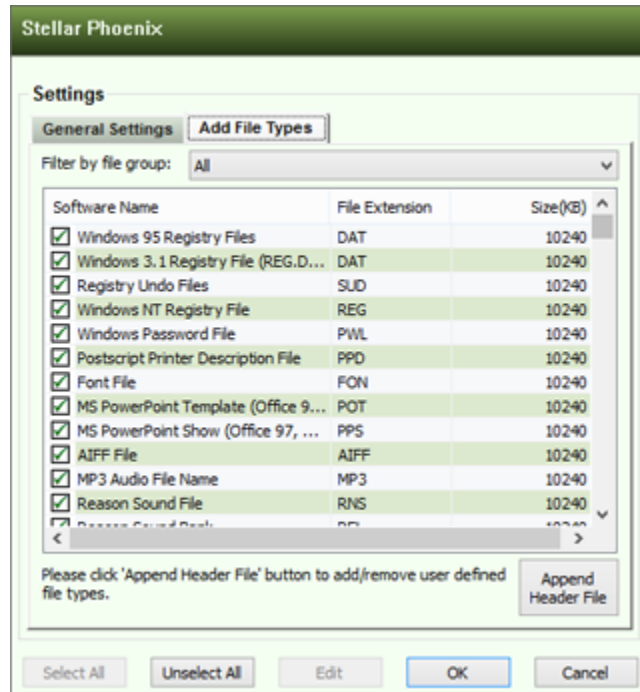
1. Select required file types.
2. Click **OK**.
3. You can click **Select All** or **Unselect All** button to select or unselect all the file types.

Adding File Type

You can add file type to the list of 'File Types' while performing signature search. In case, the file you are searching is not available in the file list you can add the file by specifying the software name, size, header information, and file extension.

To add a file type:

1. In '**Settings**' section, under '**Add File Types**' tab, click **Append Header File**.
2. In '**Add New Header**' screen, click **Add**.
3. In '**Add/Edit Header File**' screen, provide the values:
 - **Software Name** - Type name of the software or file.
 - **Group** - Select the group under which new file type will be included.
 - **File Extension** - Type the file extension.
 - **Header (in hexadecimal)** - Type the header value.
 - **At Offset (in decimal)** - Type the offset value.
4. Click **OK**.




Append Header File List screen

Editing File Type

You can also edit an existing file type or newly added file type. You can change every setting of the file type.

To edit a file type:

1. Select the file type that needs to be edited.
2. Click **Edit**. In 'Add/Edit Header File' screen, edit the following values:
 - **Software Name** - Type name of the software or file.
 - **Group** - Select the group under which new file type will be included.
 - **File Extension** - Type the file extension.
 - **Header (in hexadecimal)** - Type the header value.
 - **At Offset (in decimal)** - Type the offset value.
3. Click **OK**.



Add/Edit File Type screen



Tip: You can also edit a file type from **Add New Header** screen.

Removing File Type

You can remove user-defined file types in **Stellar Phoenix Virtual Machine Data Recovery** software.

To remove user-defined file types:

1. In '**File List**' screen, click **Append Header File**.
2. In '**Add New Header**' screen, select a file type and then click **Remove**. Repeat the procedure to remove other file types from the header file list.

FAQs

1. Can this software recover all data from the virtual disks?

Yes, of course, **Stellar Phoenix Virtual Machine Data Recovery** software can recover all your data (including files and folders) from the selected virtual volumes.

2. Can I recover a specific file by help of this software?

Yes, you can recover specific files with the help of this software. Once you scan the selected virtual disk from which you need to recover files, simply wait for the scan to complete. Then select the file or folder you need to recover from the scan results and click on the '**Recover**' button to save the files at a required destination.

3. I have formatted a volume in my virtual machine. Can I recover the files from it?

Yes, absolutely! Just launch the application, select the virtual machine type and then select the volume from which you need to recover data. After this selection, click on '**Advanced Recovery**' to begin scan. Once the scanning process is over, you should be able to recover data from formatted volume.

4. I have deleted a volume from a virtual machine. Can I recover the files from it?

Yes, without a doubt! Choose '**Click Here to Search Lost Volume**' option in the application under the '**Data Recovery**' head to find lost or deleted virtual volumes. Select the virtual disk from which you need to recover the deleted volume and then click on **Search Lost Volume** tab that opens.

5. What is quick scan and deep scan?

Quick scan is a faster scanning option. If the files are not recovered through this scanning option, then you can use deep scan which uses a different algorithm to search lost data and deliver extensive results.

6. From where I can buy the product? Is there any demo option available?

Our software is available for download & purchase on from here. Like most our software, **Stellar Phoenix Virtual Machine Data Recovery** is available as a '*Try Before Buy*' software. You can download the FREE version of the software from here to scan your storage media from which you wish to attempt recovery. The FREE version will scan & show you the preview of recoverable files so that you can be sure that the software will be able to recover your data in order to save those files you will have to buy the software.

7. Can I recover data from my exFAT partition?

Yes, you certainly can! **Stellar Phoenix Virtual Machine Data Recovery** software supports FAT, NTFS, and exFAT file systems.

8. How to find only a particular file type and recover them?

For this use the '**Advanced Find Option**' above the preview window and search the files according to your criteria. Select the file (s) and click the **Recover** button to save your files at the desired destination.

Legal Notice

Copyright

Stellar Phoenix Virtual Machine Data Recovery software, accompanied user manual and documentation are copyright of Stellar Information Technology Private Limited, with all rights reserved. Under the copyright laws, this user manual cannot be reproduced in any form without the prior written permission of Stellar Information Technology Private Limited. No Patent Liability is assumed, however, with respect to the use of the information contained herein.

Copyright © Stellar Information Technology Private Limited. All rights reserved.

Disclaimer

The Information contained in this manual, including but not limited to any product specifications, is subject to change without notice.

STELLAR INFORMATION TECHNOLOGY PRIVATE LIMITED PROVIDES NO WARRANTY WITH REGARD TO THIS MANUAL OR ANY OTHER INFORMATION CONTAINED HEREIN AND HEREBY EXPRESSLY DISCLAIMS ANY IMPLIED WARRANTIES OF MERCHANTABILITY OR FITNESS FOR ANY PARTICULAR PURPOSE WITH REGARD TO ANY OF THE FOREGOING STELLAR INFORMATION TECHNOLOGY PRIVATE LIMITED ASSUMES NO LIABILITY FOR ANY DAMAGES INCURRED DIRECTLY OR INDIRECTLY FROM ANY TECHNICAL OR TYPOGRAPHICAL ERRORS OR OMISSIONS CONTAINED HEREIN OR FOR DISCREPANCIES BETWEEN THE PRODUCT AND THE MANUAL. IN NO EVENT SHALL STELLAR INFORMATION TECHNOLOGY PRIVATE LIMITED, BE LIABLE FOR ANY INCIDENTAL, CONSEQUENTIAL SPECIAL, OR EXEMPLARY DAMAGES, WHETHER BASED ON TORT, CONTRACT OR OTHERWISE, ARISING OUT OF OR IN CONNECTION WITH THIS MANUAL OR ANY OTHER INFORMATION CONTAINED HEREIN OR THE USE THEREOF.

Trademarks

Stellar Phoenix Virtual Machine Data Recovery® is a registered trademark of Stellar Information Technology Private Limited.

Windows XP®, Windows Vista®, Windows 7®, and Windows 8® are registered trademarks of Microsoft® Corporation Inc.

All Trademarks Acknowledged.

All other brands and product names are trademarks or registered trademarks of their respective companies.

License Agreement

Stellar Phoenix Virtual Machine Data Recovery

Copyright © Stellar Information Technology Private Limited. INDIA.

www.stellarinfo.com

All rights reserved.

All product names mentioned herein are the trademarks of their respective owners.

This license applies to the standard-licensed version of **Stellar Phoenix Virtual Machine Data Recovery**.

Your Agreement to this License

You should carefully read the following terms and conditions before using, installing or distributing this software, unless you have a different license agreement signed by Stellar Information Technology Private Limited.

If you do not agree to all of the terms and conditions of this License then do not copy, install, distribute or use any copy of Stellar Phoenix Virtual Machine Data Recovery with which this License is included, you may return the complete package unused without requesting an activation key within 30 days after purchase for a full refund of your payment.

The terms and conditions of this License describe the permitted use and users of each Licensed Copy of Stellar Phoenix Virtual Machine Data Recovery. For purposes of this License, if you have a valid single-user license, you have the right to use a single Licensed Copy of Stellar Phoenix Virtual Machine Data Recovery. If you or your organization has a valid multi-user license, then you or your organization has the right to use up to a number of Licensed Copies of Stellar Phoenix Virtual Machine Data Recovery equal to the number of copies indicated in the documents issued by Stellar Information Technology Private Limited when granting the license.

Scope of License

Each Licensed Copy of Stellar Phoenix Virtual Machine Data Recovery may either be used by a single person or used non-simultaneously by multiple people who use the software personally installed on a single workstation. This is not a concurrent use license.

All rights of any kind in Stellar Phoenix Virtual Machine Data Recovery, which are not expressly granted in this license, are entirely and exclusively reserved to and by Stellar Information Technology Private Limited. You may not rent, lease, modify, translate, reverse engineer, decompile, disassemble or create derivative works based on Stellar Phoenix Virtual Machine Data Recovery nor permit anyone else to do so. You may not make access to Stellar Phoenix Virtual Machine Data Recovery available to others in

connection with a service bureau, application service provider or similar business nor permit anyone else to do so.

Warranty Disclaimers and Liability Limitations

Stellar Phoenix Virtual Machine Data Recovery and all accompanying software, files, data and materials are distributed and provided AS IS and with no warranties of any kind, whether expressed or implied. You acknowledge that good data processing procedure dictates that any program including Stellar Phoenix Virtual Machine Data Recovery must be thoroughly tested with non-critical data before there is any reliance on it and you hereby assume the entire risk of all use of the copies of Stellar Phoenix Virtual Machine Data Recovery covered by this License. This disclaimer of warranty constitutes an essential part of this License. In addition, in no event does Stellar authorize you or anyone else to use Stellar Phoenix Virtual Machine Data Recovery in applications or systems where its failure to perform can reasonably be expected to result in a significant physical injury or in loss of life. Any such use is entirely at your own risk and you would not hold Stellar responsible for any and all claims or losses relating to such unauthorized use.

In no event shall Stellar Information Technology Private Limited or its suppliers be liable for any special, incidental, indirect, or consequential damages whatsoever (including, without limitation, damages for loss of business profits, business interruption, loss of business information, or any other pecuniary loss) arising out of the use of or inability to use the software product or the provision of or failure to provide support services, even if Stellar Information Technology Private Limited has been advised of the possibility of such damages. In any case, Stellar Information Technology Private Limited's entire liability under any provision shall be limited to the amount actually paid by you for the software product.

General

This License is the complete statement of the agreement between the parties on the subject matter and merges and supersedes all other or prior understandings, purchase orders, agreements and arrangements. This License shall be governed by the laws of the State of Delhi, India. Exclusive jurisdiction and venue for all matters relating to this License shall be in courts and fora located in the State of Delhi, India and you consent to such jurisdiction and venue. There are no third party beneficiaries of any promises, obligations or representations made by Stellar Information Technology Private Limited herein. Any waiver by Stellar Information Technology Private Limited of any violation of this License by you shall not constitute nor contribute to a waiver by Stellar Information Technology Private Limited of any other or future violation of the same provision or any other provision of this License.

Copyright © Stellar Information Technology Private Limited. All rights reserved.

About Stellar

Stellar Data Recovery is a global leader in providing data recovery, data migration and data erasure solutions for the past two decades. **Stellar Data Recovery** is a customer centric, critically acclaimed, global data recovery, data migration & erasure solutions provider with cost effective solutions available for large corporates, SMEs & Home Users. **Stellar Data Recovery** is headquartered in New Delhi, India and has a strong presence across USA, Europe & Asia.

Product Line:

Data Recovery

A widest range of data recovery software that helps you recover your valued data lost after accidental format, virus problems, software malfunction, file/directory deletion, or even sabotage! [More Info >>](#)

File Recovery

The most comprehensive range of file undelete and unerase software for Windows and MS office repair tools. [More Info >>](#)

Email Recovery

A wide range of mail recovery, mail repair and mail conversion applications for Outlook, Outlook Express and Exchange useful in instances of data loss due to damages and corruption of Email. [More Info >>](#)

Data Protection

A wide range of Prevent Data Loss, Data backup and Hard Drive Monitoring Applications to ensure complete data protection against hard drive crash. [More Info >>](#)

For more information about us, please visit www.stellarinfo.com

Data Erasure

Stellar Data Erasure software under the brand BitRaser help businesses & consumers permanently erase confidential data beyond the scope of data recovery. You can perform high speed bulk data erasure & generate erasure certificates for audit trail purpose. BitRaser supports 24 International data erasure standards. [More Info >>](#)

For more information about us, please visit www.stellarinfo.com
